

NEUSKIN

A system that grows with you.

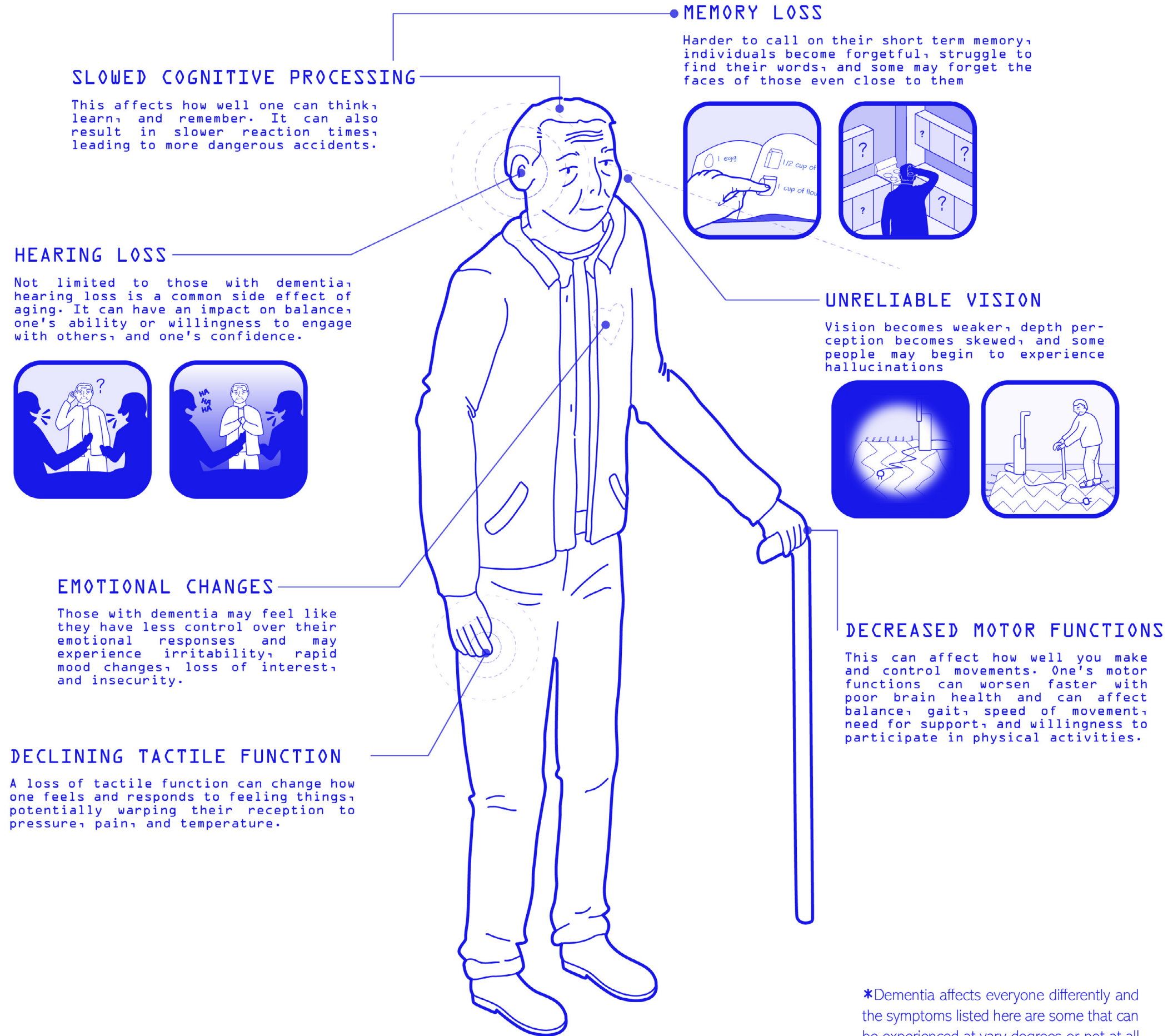
A home is meant to reflect and support everything that makes us who we are: our struggles, our needs, our preferences, and lifestyles. But what happens when our mind and body ages out of the standardized box of “young and able”?

Built in the 1960s, St. James Town, TO, houses the highest density of residents in the post-war towers. Due to a loss of street grid, lack of spatial engagement, and absence of adequate social infrastructure, St. James Town suffers from social and spatial segregation that further marginalizes the residences of the neighborhood. Amongst this neighbourhood, 200 Wellesley Street East has become an example of the subsequent qualities of an aging building, unfit for many of its aging residents. Our project peers into the life of an aging resident, Thien, who has recently received a diagnoses of dementia, and how redesigning the unit skin to be a living, breathing part of the home can enable elders like Thien to reclaim agency over their homes and lives once again.

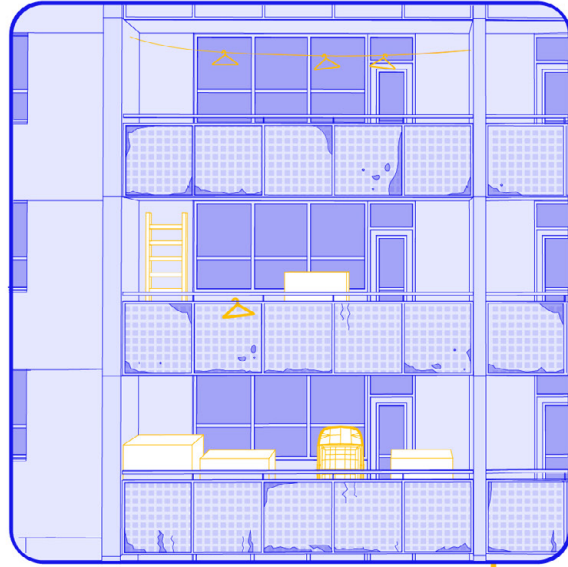
Through a combination of standardized panel units, our project, Neuskin, allows users to organize plug-and-use attachments on their walls according to their evolving needs. This new system promotes inclusivity through adaptable design with a focus on cognitive and tactile stimulation, while also striving to keep a sense of joy in one's home. Neuskin tackles the issues of accessibility, legibility, and comfortability which arise as elders are presented with a host of new needs to keep their living spaces functional and their brains engaged. Our comprehensive catalogue of attachments can be flexible to user interpretation, which means anyone can find support in Neuskin, not just the aging population: a child with down syndrome, a stay at home mother, a university student, or a wheelchair user. Neuskin means focusing on adaptability over displacement. As an interactive system, the relationship between users and their everyday objects becomes enriched. Rather than constantly accumulating new objects to satisfy ever-changing needs, this system establishes newfound ways to reuse pre-owned objects. Our panels and tracks are made from aluminum, a recyclable material, to ensure reusability and adaptability overtime.

Emily Li & Eva Sabourin

THE USER



THE CHALLENGES



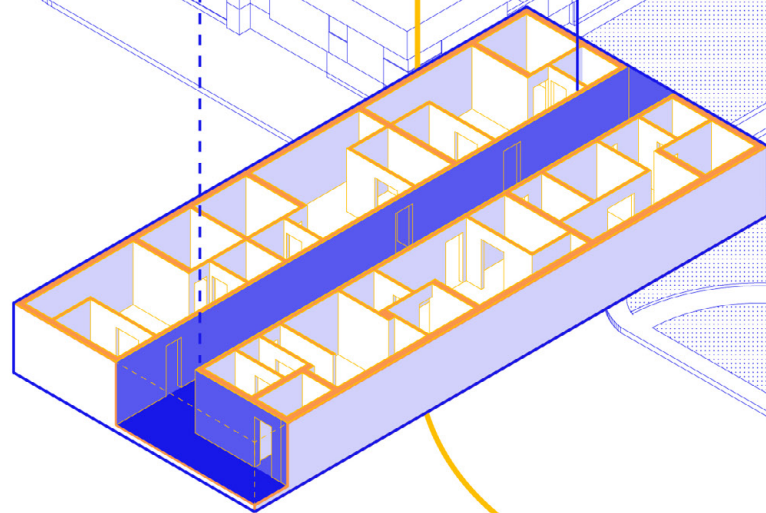
OUTDATED BALCONY

units are outdated, aging
and balconies are unused



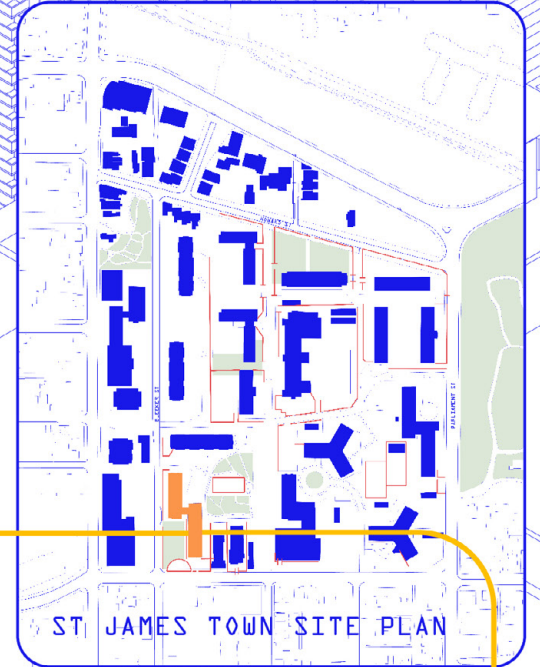
ISOLATING ENVIRONMENT

corridors are poorly
lit and feel unwelcoming

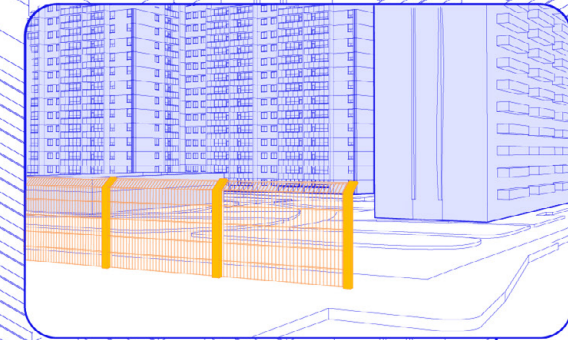


200 Wellerley Street East

29 Storey
719 Units



ST JAMES TOWN SITE PLAN



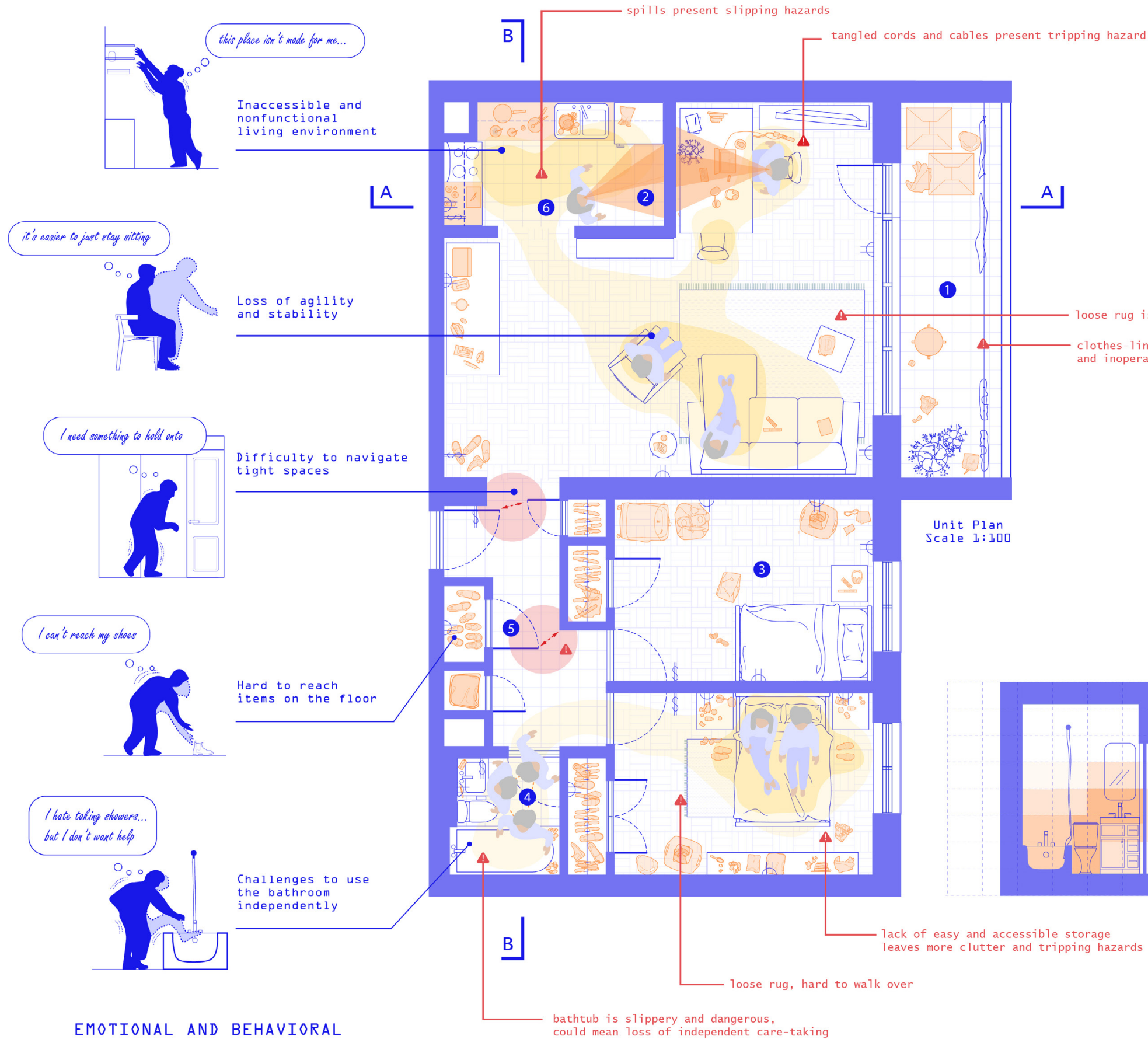
FRAGMENTED URBAN FABRIC

dead-ends, lack of proper
way finding, large set-backs
create a lack of spatial
engagement and further isolating
environment

LACK OF COMMUNITY SPACE

this highly dense neighborhood
comprised of several post-war
towers has a lack of community
space and lack of safer, well-
maintained public facilities

THE DAILY LIFE

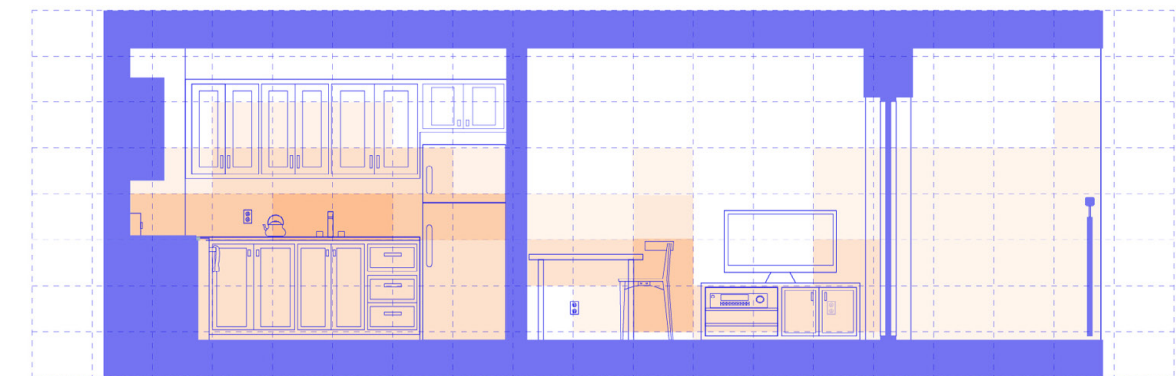


BEFORE INSTALLING NEUSKIN

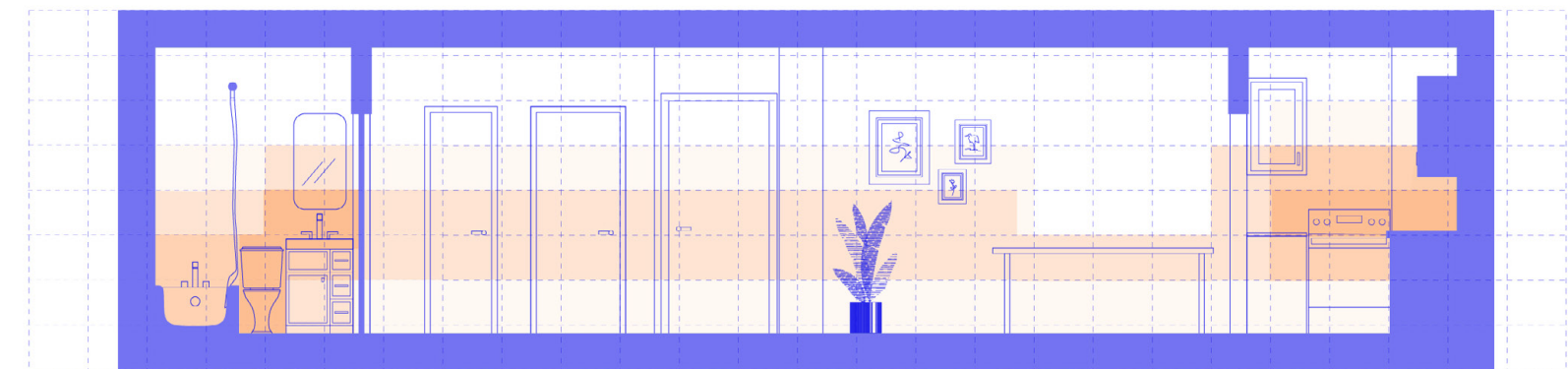
PINCH POINTS

- 1 Unusable terrace space with lots of clutter
- 2 Kitchen wall blocking off connection and views between spaces
- 3 Second bedroom has piles of clutter and lacks function
- 4 Tight bathroom space, hard to use and causes accidents
- 5 Narrow space, unable to navigate when doors are open
- 6 Lack of usable counter space and easy-to-reach storage

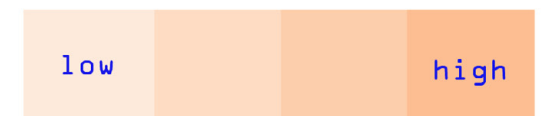
 Slip and trip hazards



Section A



Section B

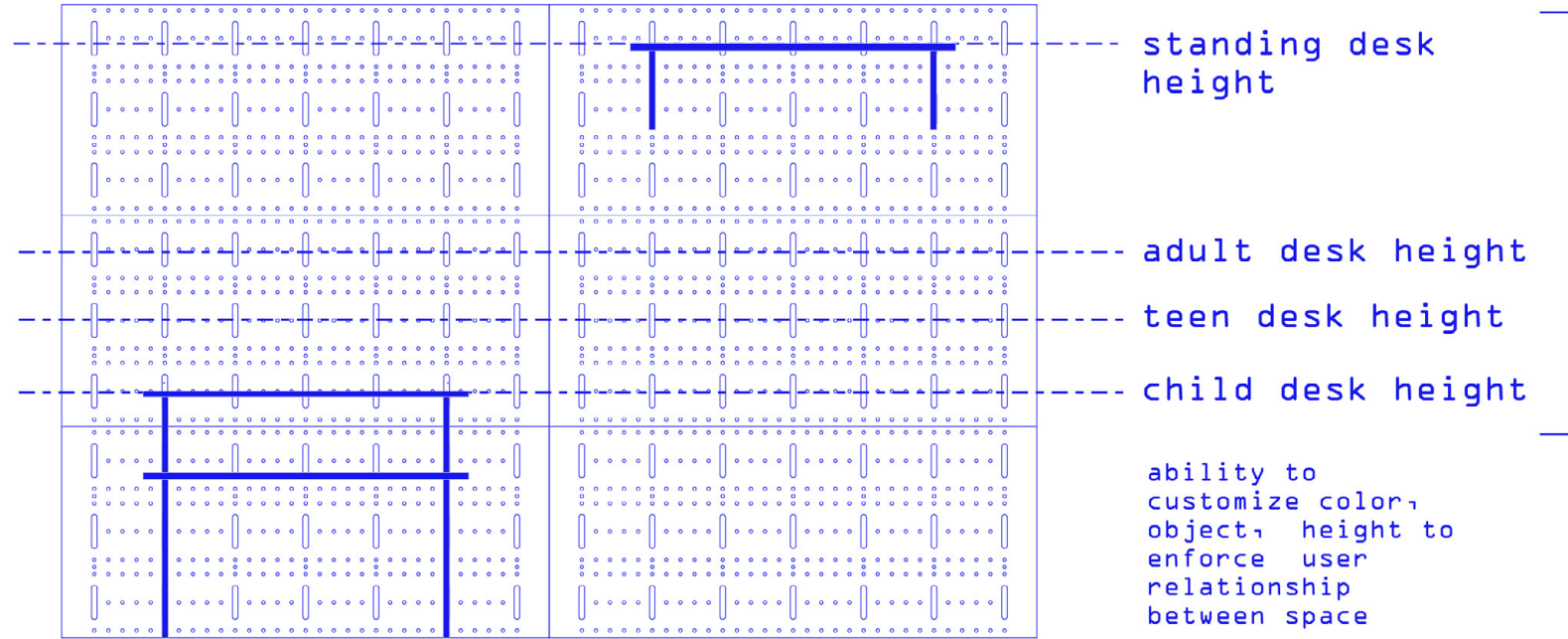


VERTICAL ACTIVITY DENSITY

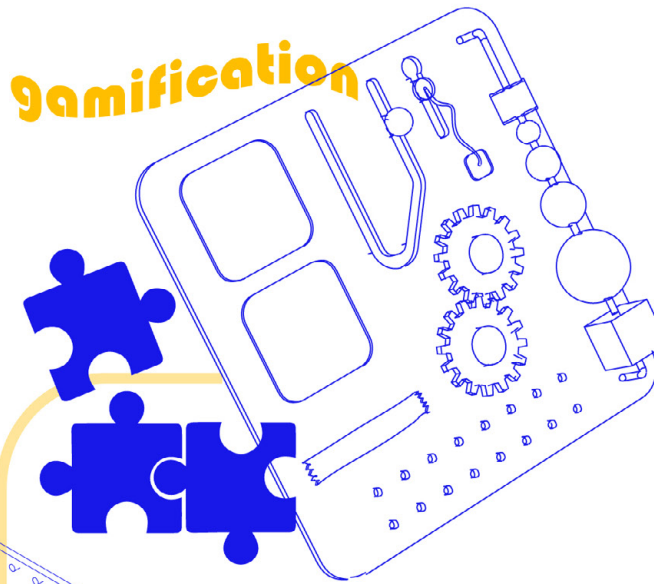
EMOTIONAL AND BEHAVIORAL CHANGES IN THE AGING POPULATION

THE DESIGN FOCUS

Multigenerational



gamification

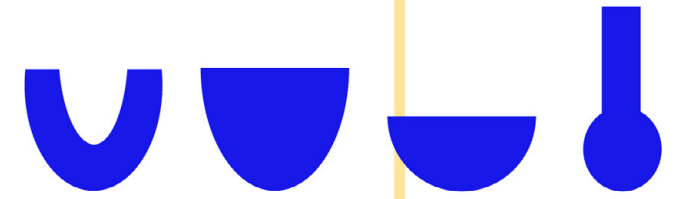


mind activity



"Rock, (Toliet) Paper, Scissors"
Martha Gallery, 2020

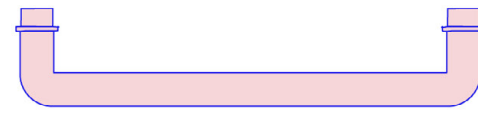
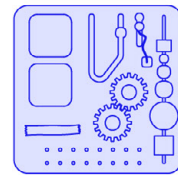
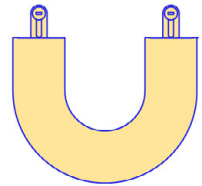
customizable



adaptability

cognitive & tactile

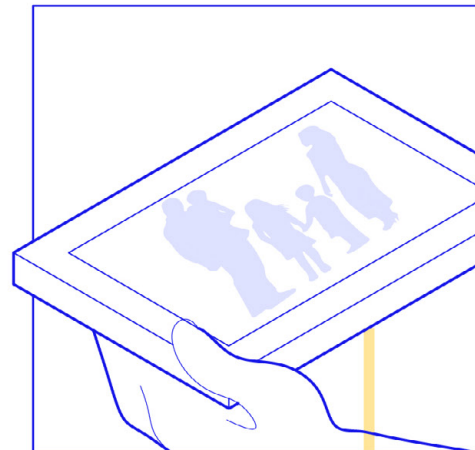
joy & agency



engage everyday objects to your needs

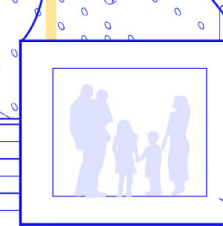
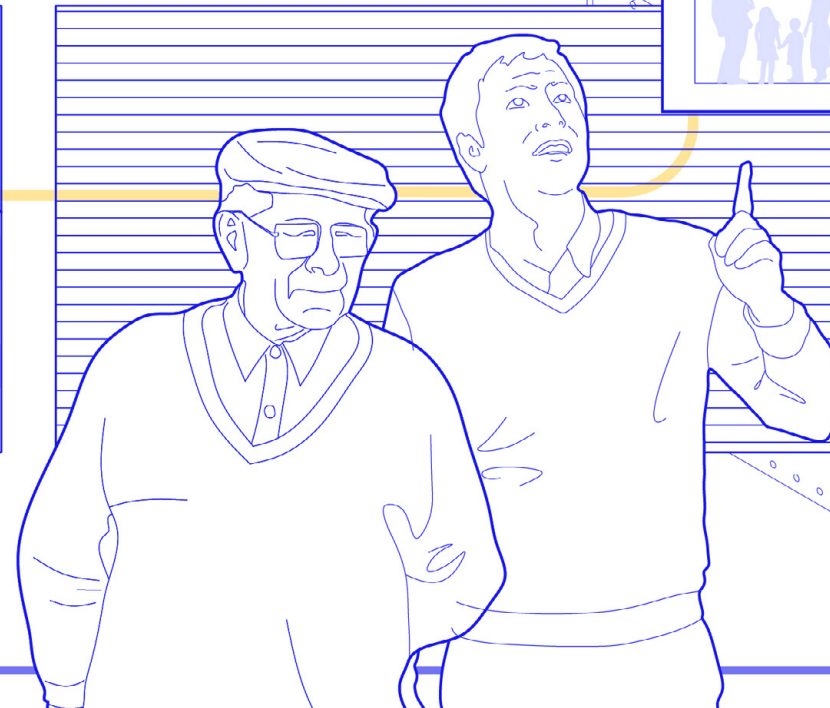
ownership

what color lets you best spot something?



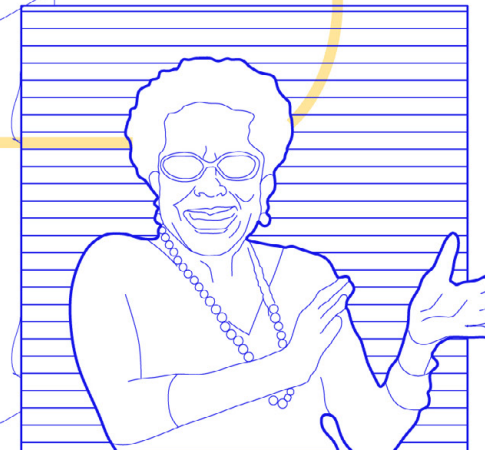
what is your relationship to everyday objects?

craft and care



a rail to hold onto or hang your clothes

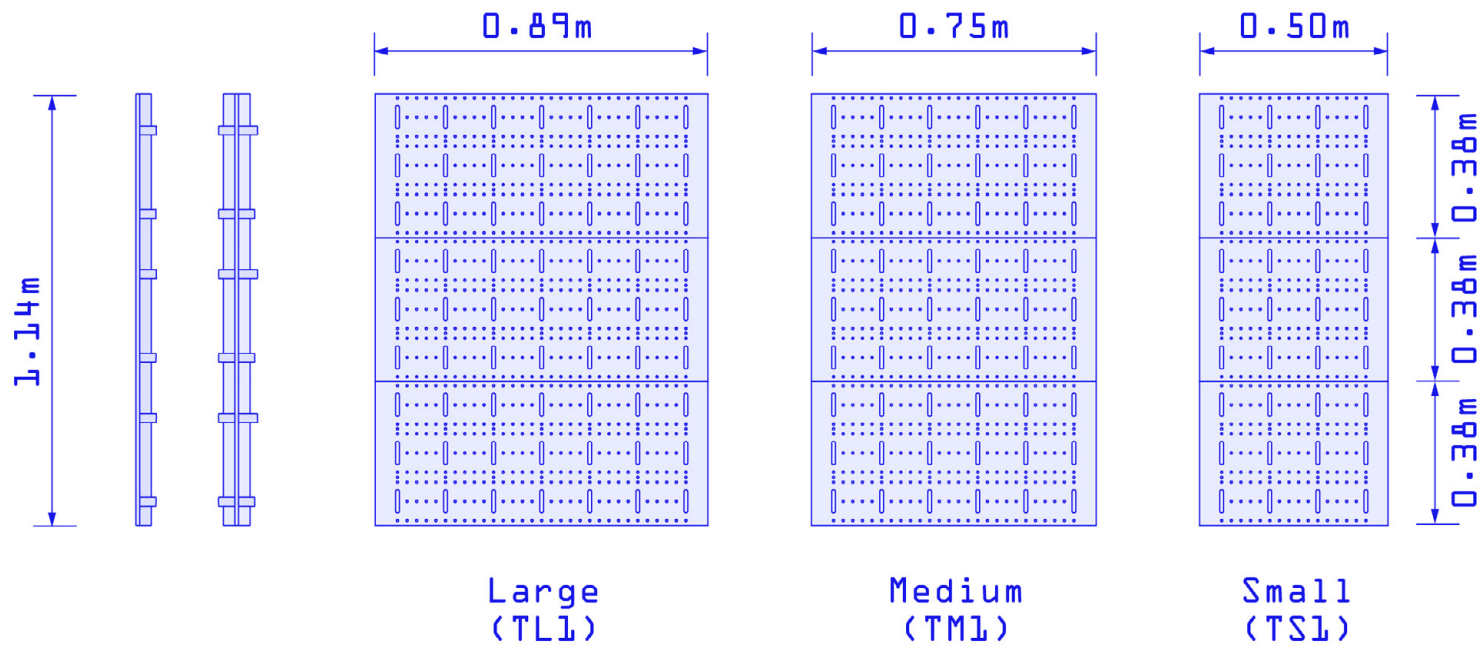
independence



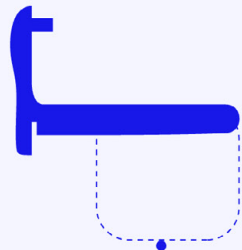
gaining or regaining independence regardless of age

PEG BOARD SYSTEM:

This aluminum skin system has a series of holes that host a category of custom attachments using our two hook systems and standard universal holes (for IKEA, Home Depot attachments etc) The panel comes in 3 widths and variety of lengths & configuration. Each panel length is hooked onto a track in the same length.

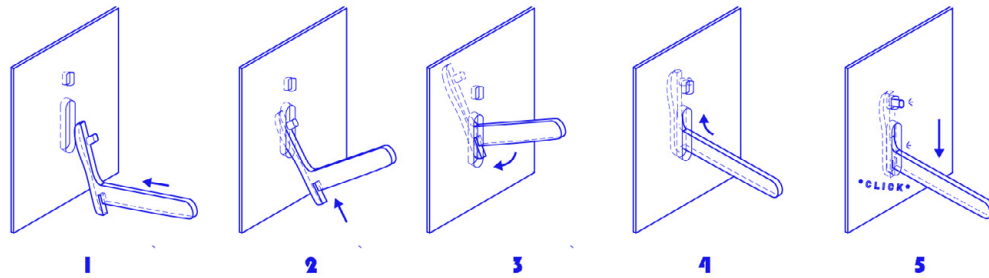


HOOK #1

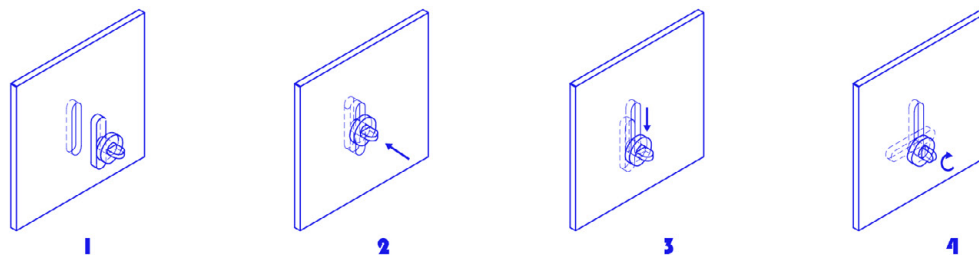


3D print your own attachments with our hooks!

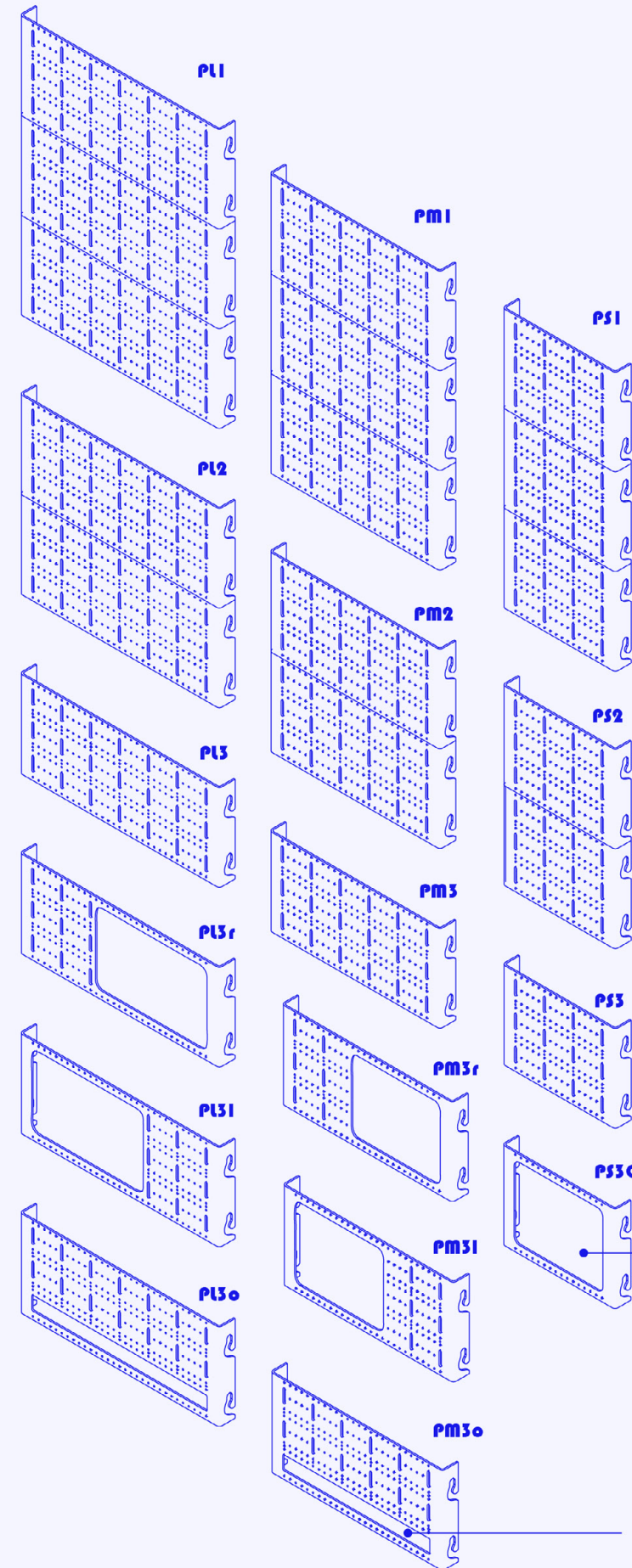
HOW TO INSTALL HOOK



HOOK #2

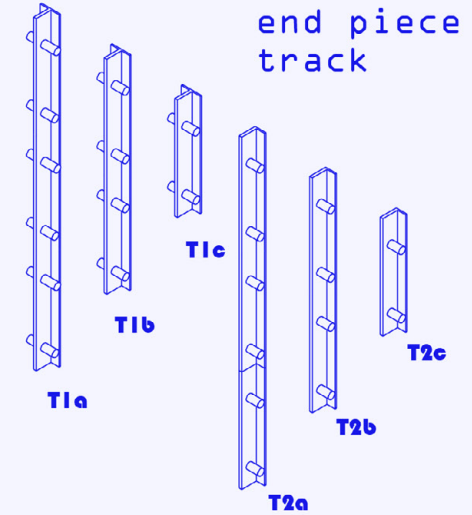


PANEL & TRACK VARIATIONS

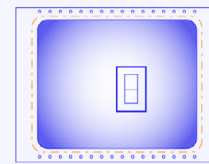


mid piece track

end piece track

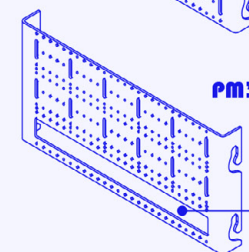


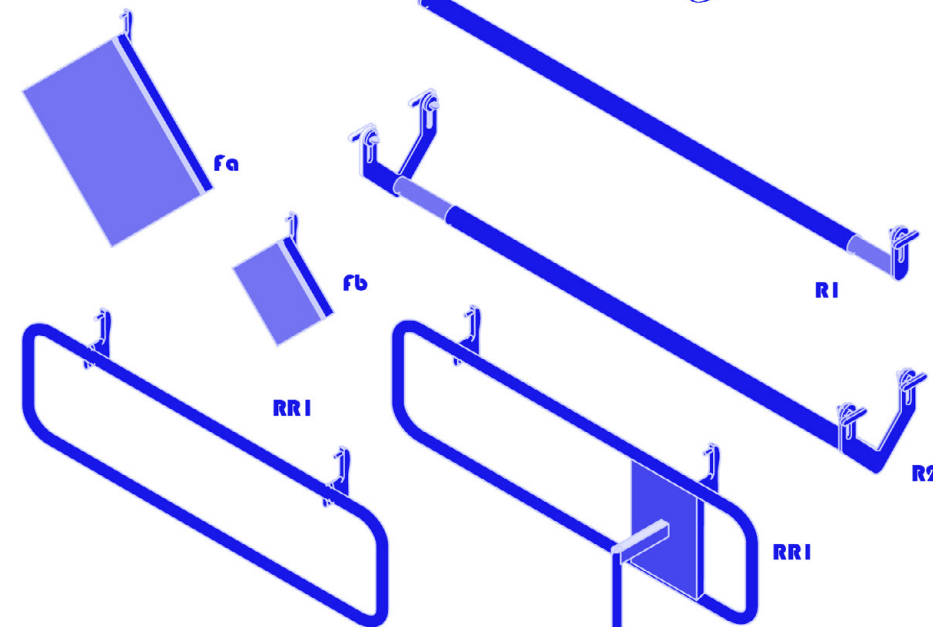
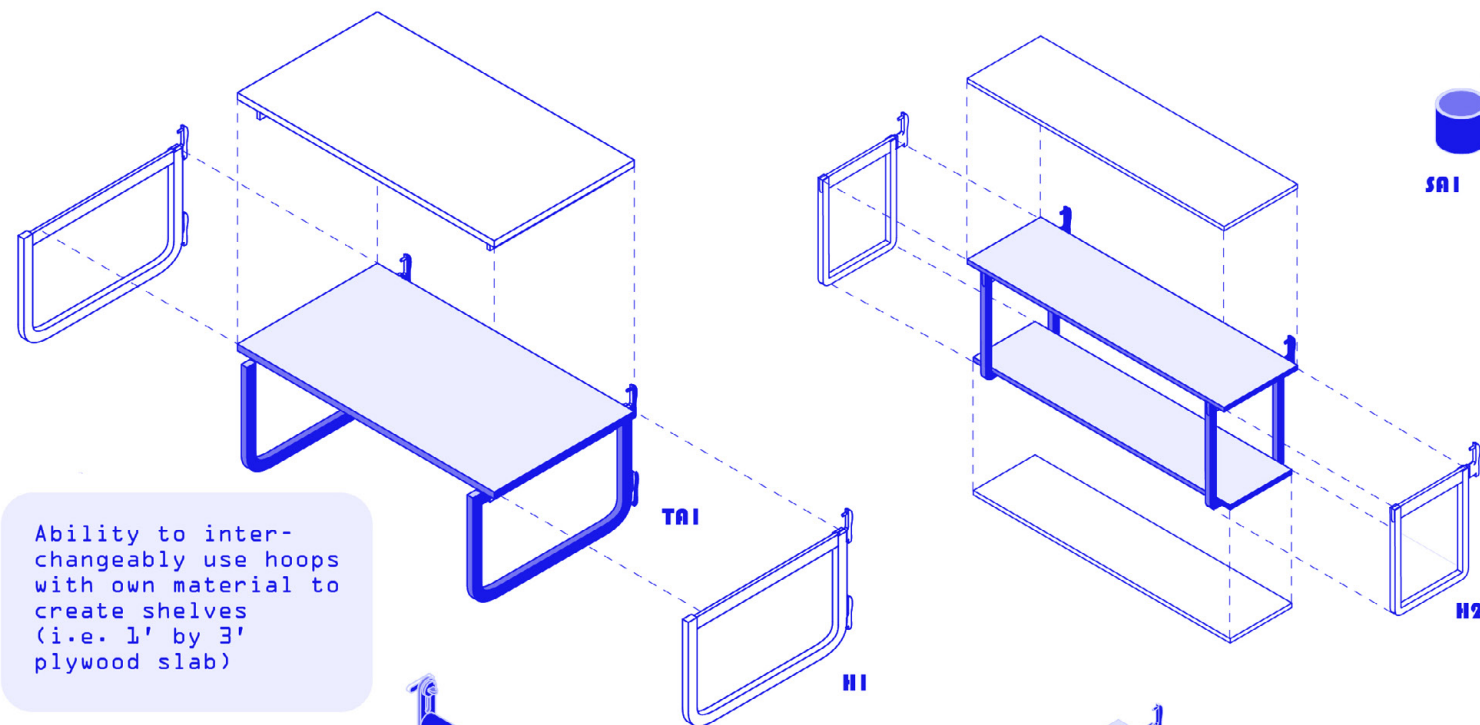
light-cove behind cut-out board for night visibility



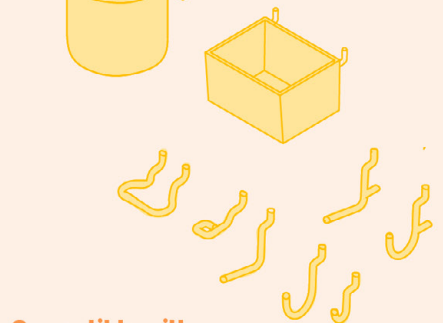
cut-out board for light switches and power outlets

slim cut-out board for threading power cords through panels

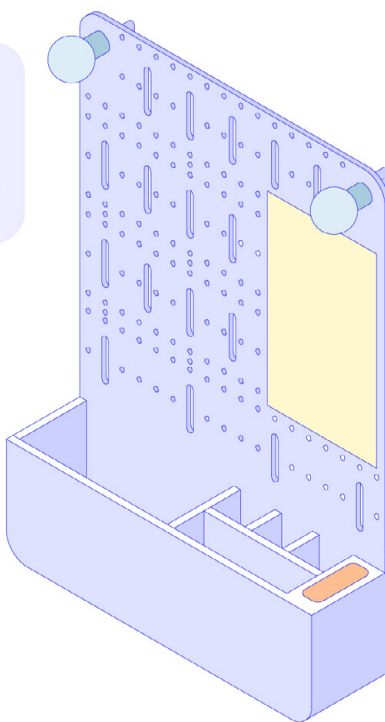
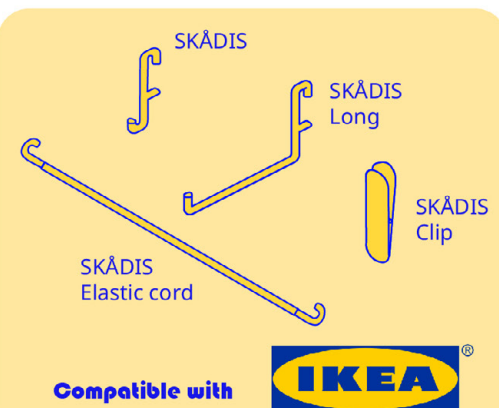




Onward (pack of 43) Peg Hook Kit

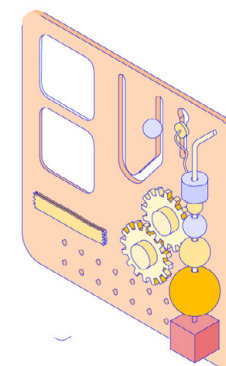


Add-on lamp component (LI) that can be added on to rail and move horizontally)



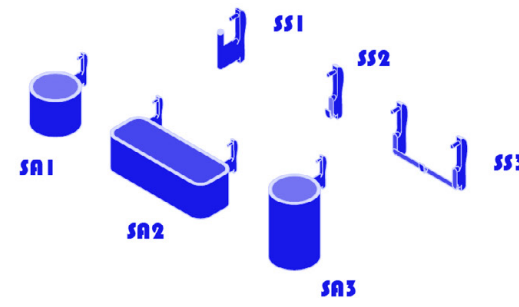
MEDI

Medicine board for easy & flexible at-home-care storage to hook on and off between rooms

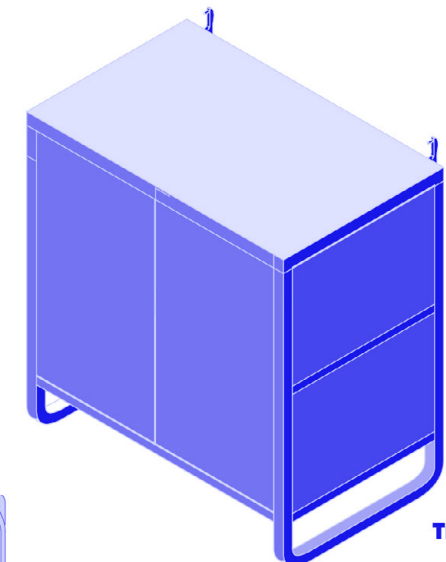
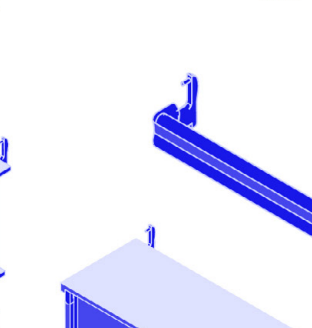
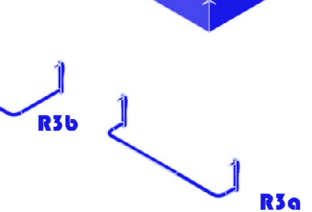
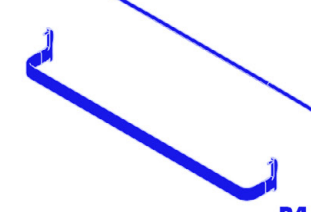
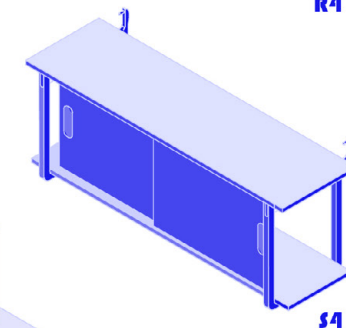
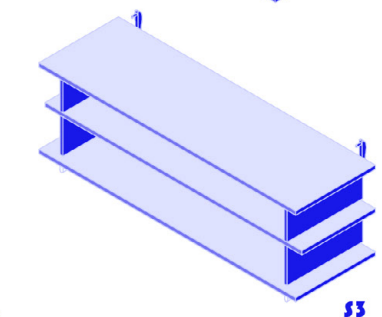
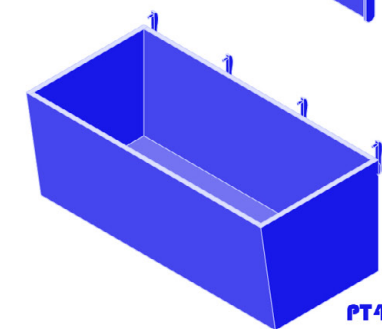
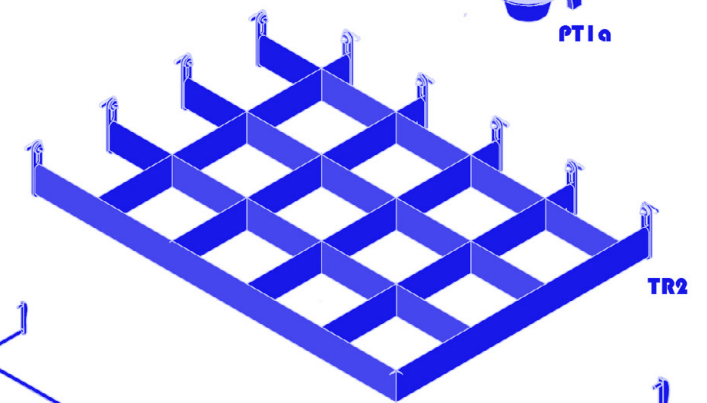
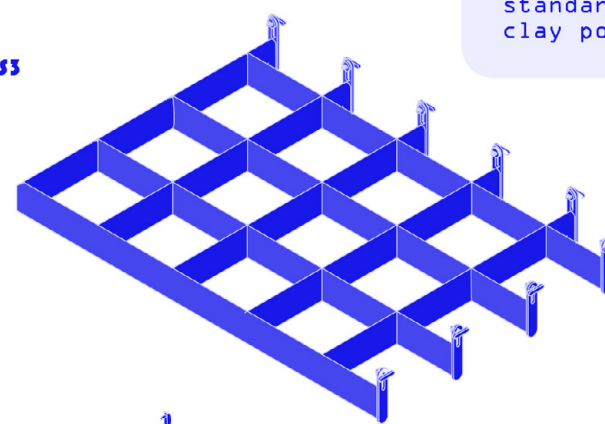
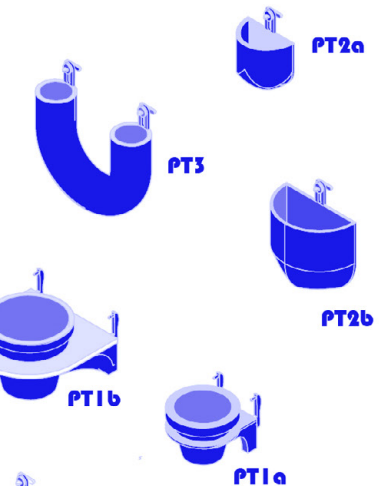


FIDI

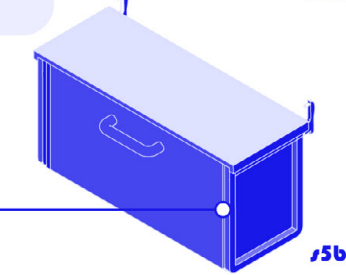
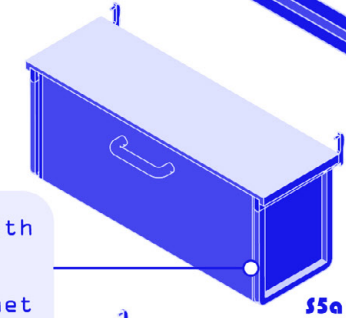
Fidget board attachment for cognitive therapy



Three pot holder sizes that hold standard 4"/6"/8" clay pots

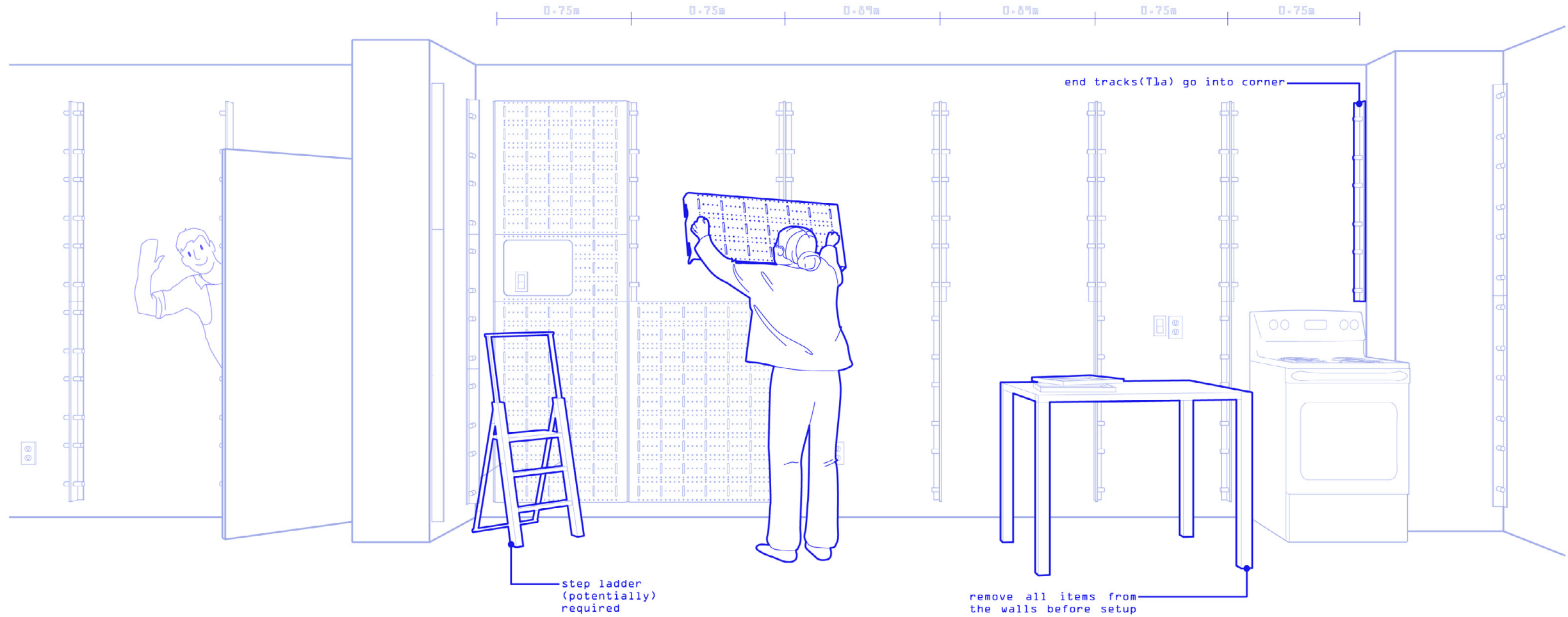
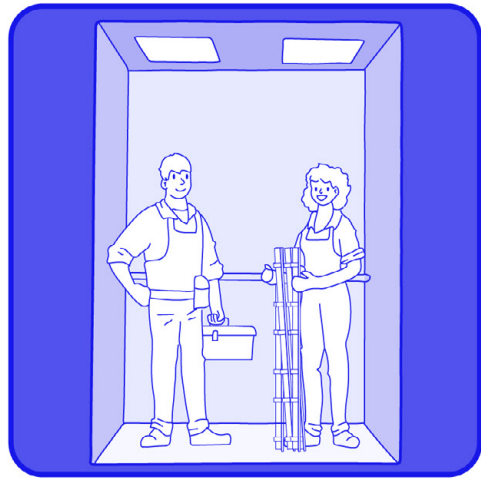
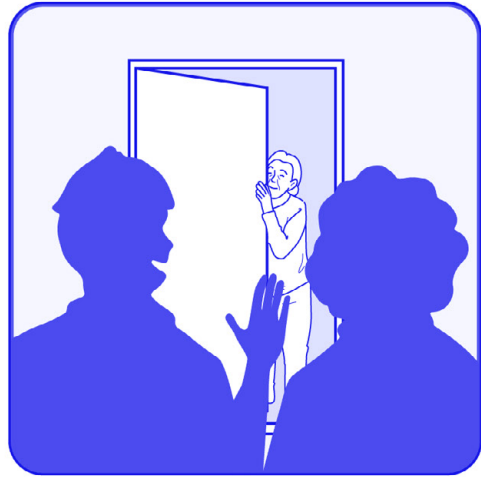


H2 Hoop with sliding track to have cabinet



CUSTOM AND ADAPTABLE ATTACHMENTS

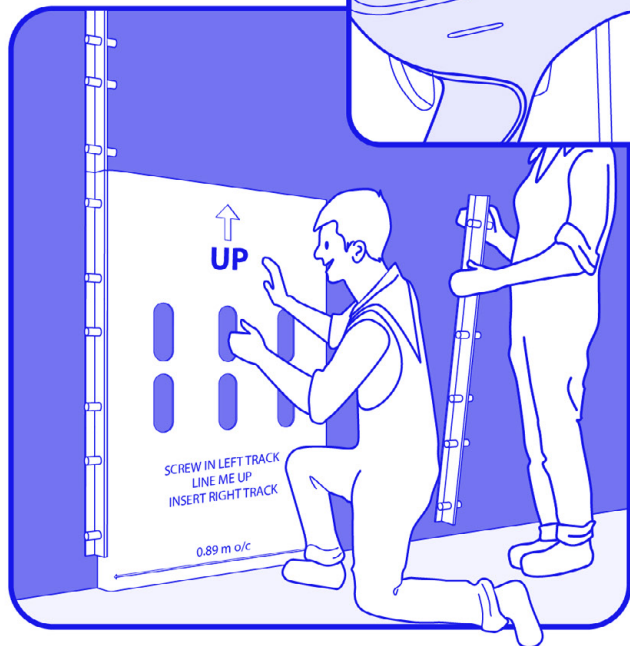
THE INSTALLATION



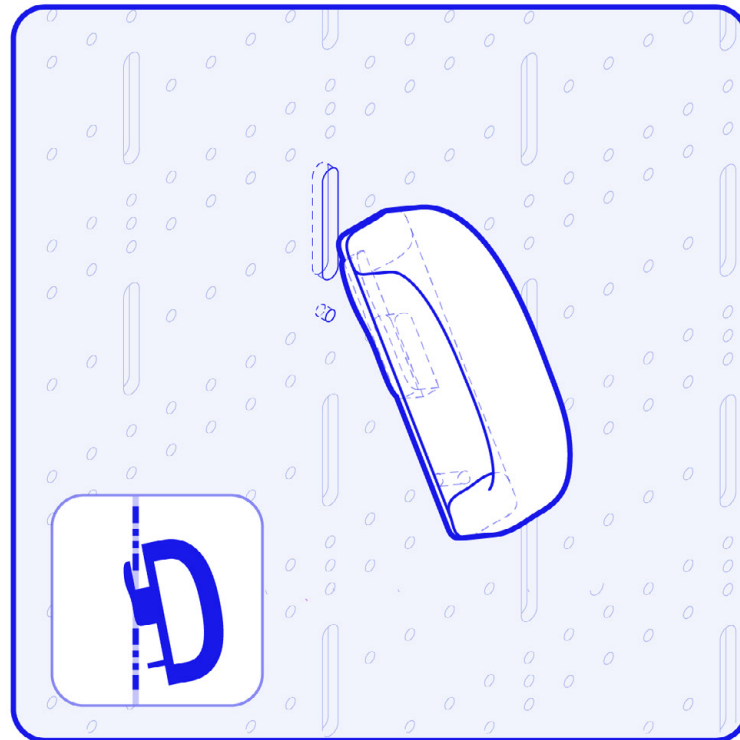
USE TEMPLATE
PANELS FOR
PROPER
SPACING AND
ALIGNMENT!



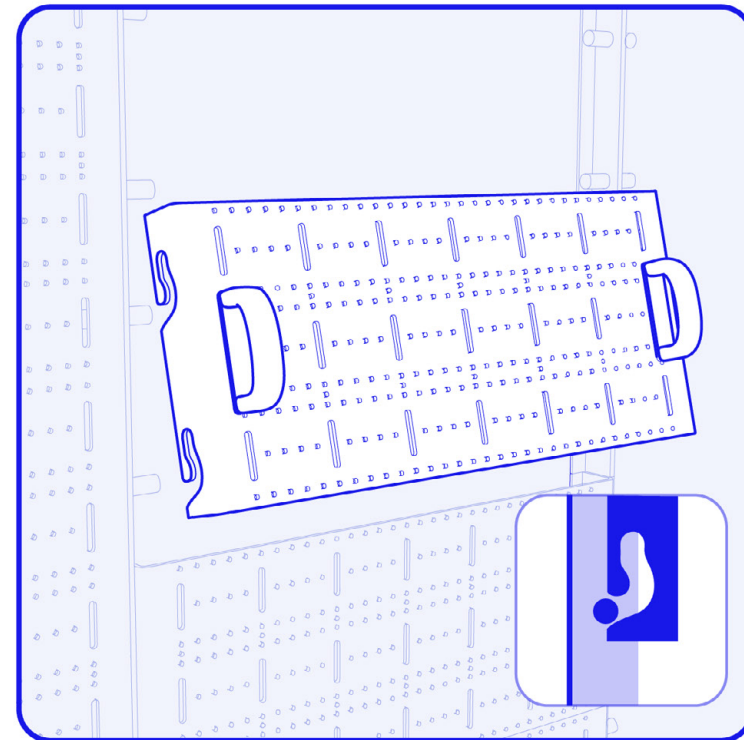
#10 HEX HEAD SCREW



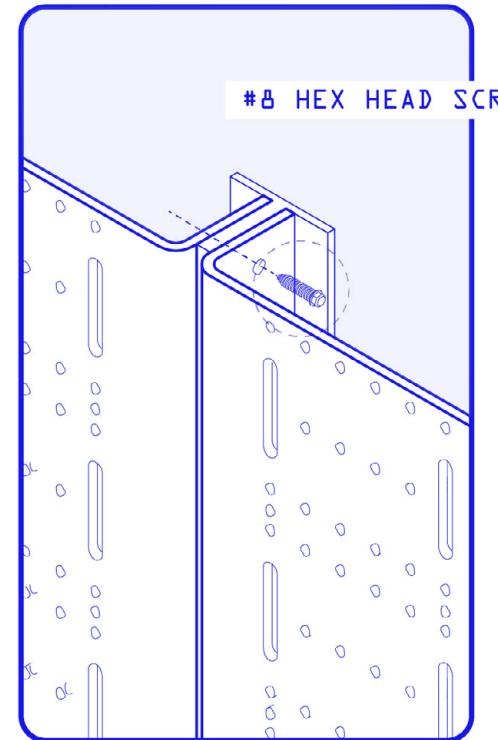
1. INSERT HANDLE ATTACHMENT



2. HOIST PANEL ONTO TRACK RUNGS



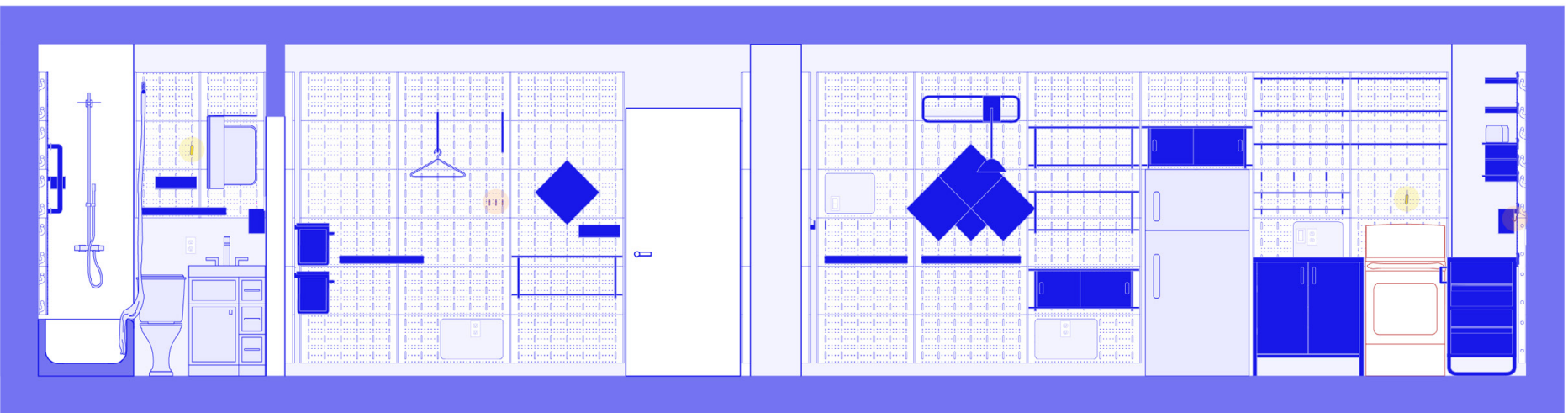
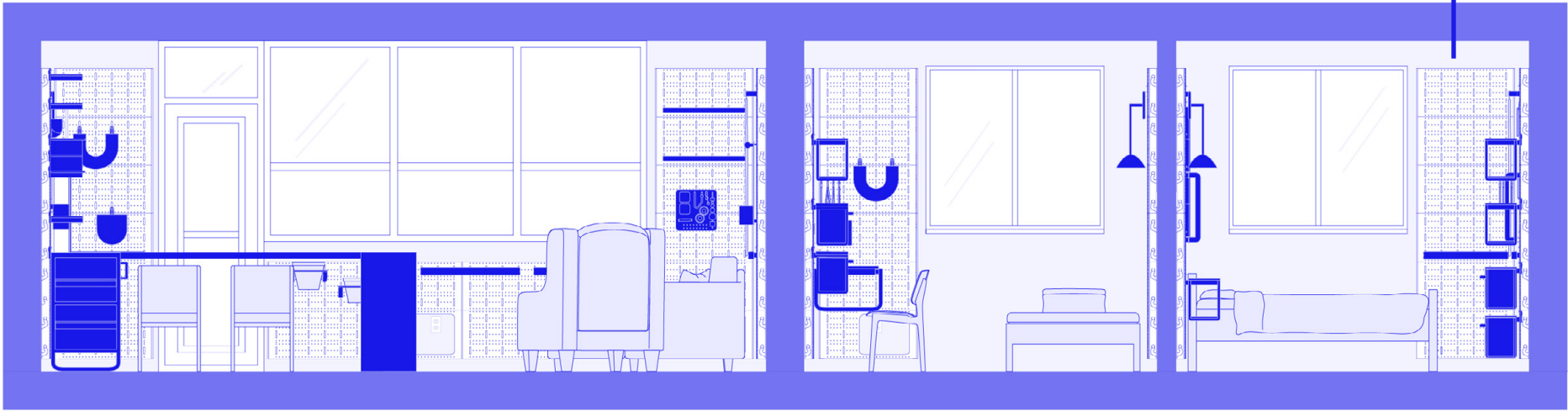
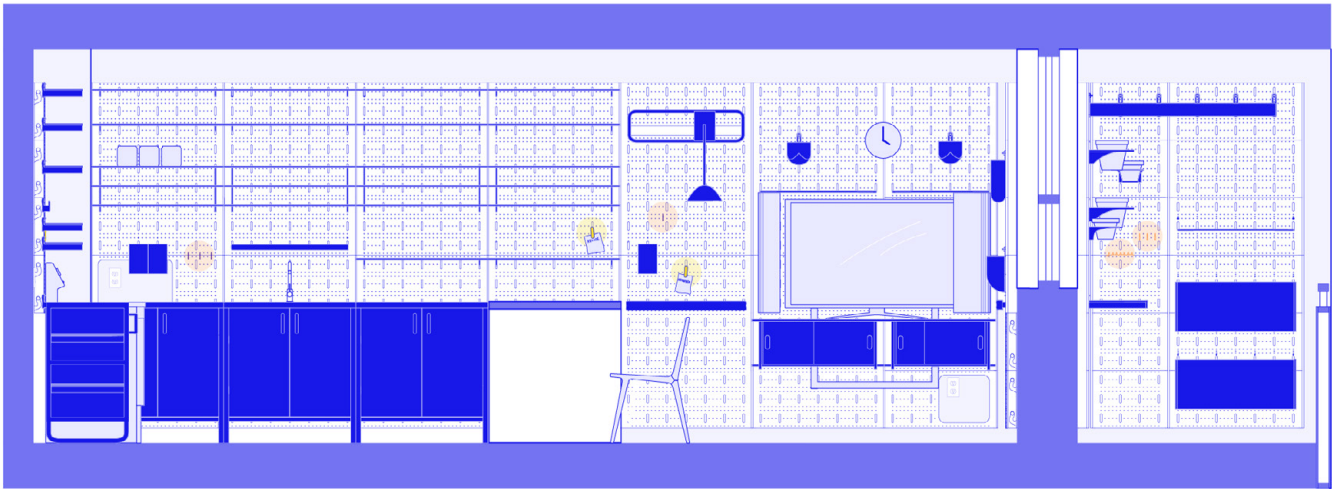
3. SECURE TOP PANEL*



#8 HEX HEAD SCREW

*only required for outdoor use or extreme conditions

THE ADAPTED UNIT

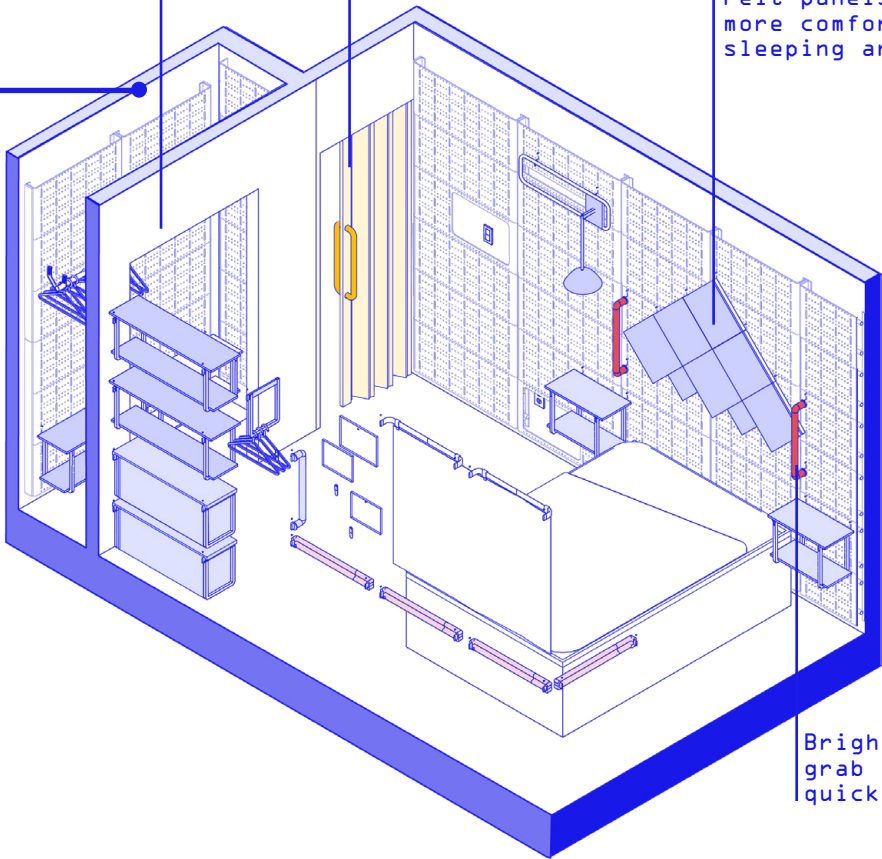


Clothing kept to one area for consistency

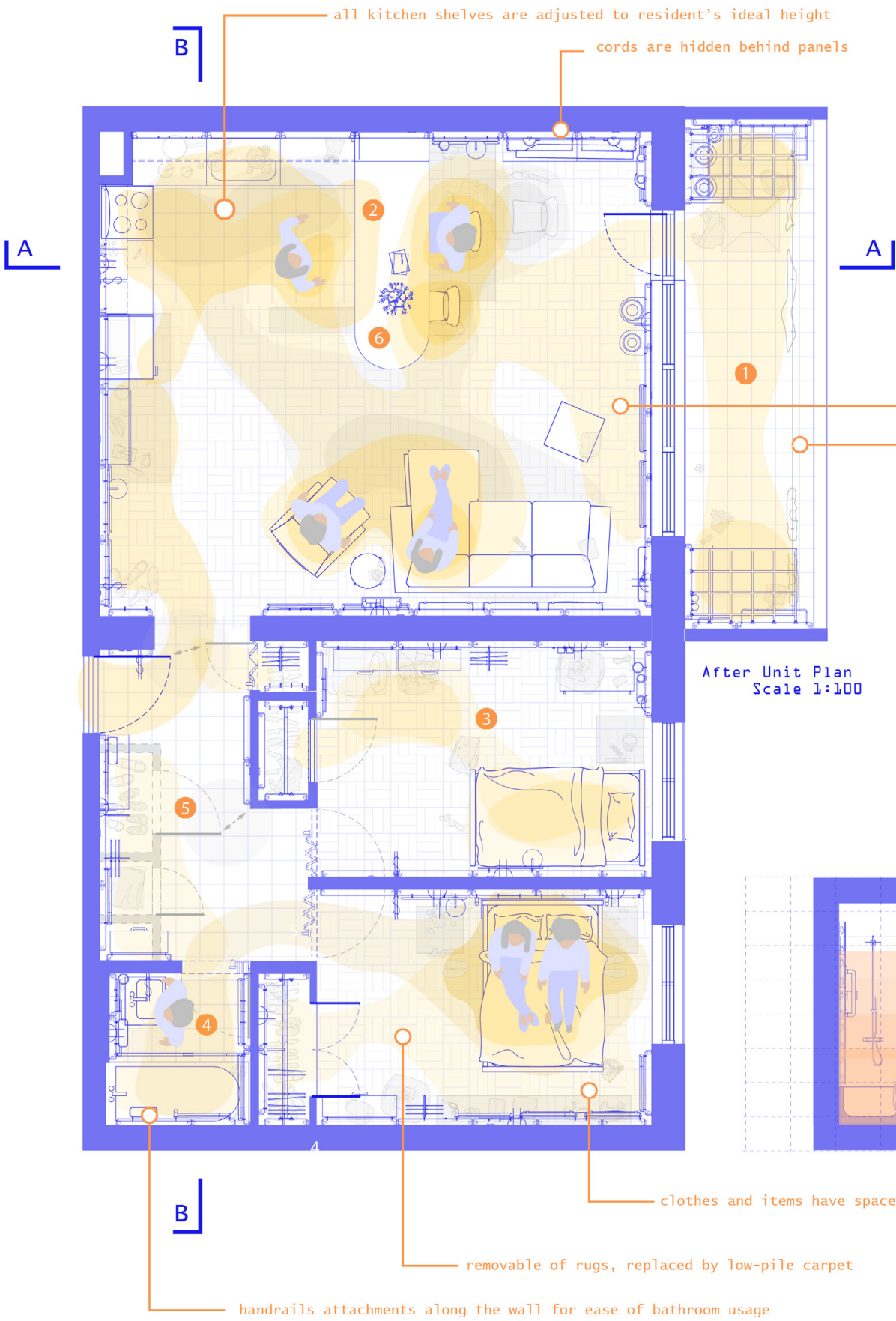
New sliding doors for accessibility

Felt panels for a more comfortable sleeping area

Brightly coloured grab bars for quicker reaction



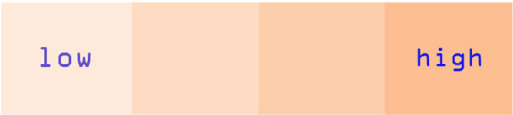
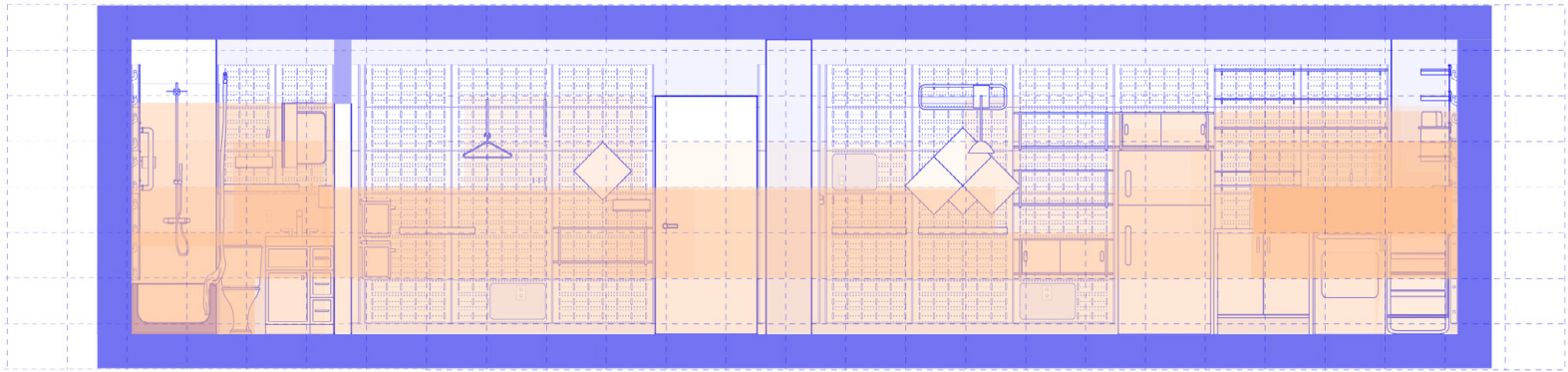
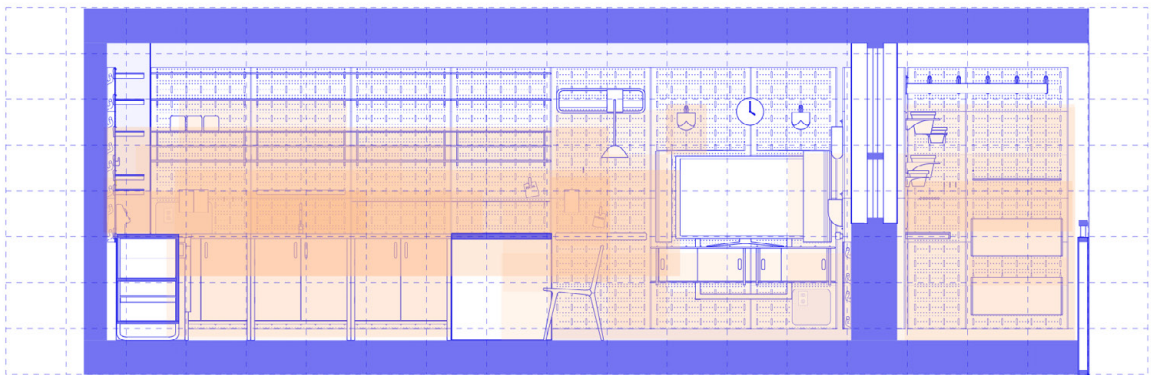
THE NEW DAILY LIFE



BEFORE INSTALLING NEUSKIN

GOLD ZONES

- 1 Increase of usage for balcony with outdoor garden
 - 2 Open floor plan, view of living room from kitchen
 - 3 More storage options and flexible room usage between nurse/Linh
 - 4 Folding door open space up, clutter is off floors and on wall
 - 5 Remove nonfunctional closets to open up entry
 - 6 Increase counter space, storage space, easy-to reach storage
- Solutions to counteract safety and slipping hazards



VERTICAL ACTIVITY DENSITY

This is a detailed isometric architectural drawing of a multi-story building facade. The drawing is presented in a light blue line-art style on a white background. It shows a series of vertical window units, each revealing a different interior space. From top to bottom, the visible spaces include: a living area with a sofa and coffee table; a bedroom with a bed and bedside table; a bathroom with a bathtub and toilet; a kitchen with a sink and stove; and another bedroom with a bed and bedside table. The drawing uses perspective to show the depth of the rooms and the arrangement of furniture and fixtures. The overall composition is clean and modern, emphasizing the architectural details of the building's interior layout.

